

PAC EQUIPMENT FORM; Directions for use (please read):

Return to PAC Coordinator within 5 days of Facility App submittal – fax 425-456-4584 OR 12037 NE 5TH Street, Bellevue WA 98005

To complete this form: In the **COLUMN** of the school being used **CIRCLE** the items needed.

the equipment is available at that school, a 'Y' will be indicated. If it is not available 'N' is indicated. Associated costs are indicated with '\$Y'. A number indicates the *general* amount available at that school; *each theater, and the equipment within, are used daily for learning. At times the full number indicated is not available and not known until we arrive.*

Add special instructions on each line or at bottom in the comments section

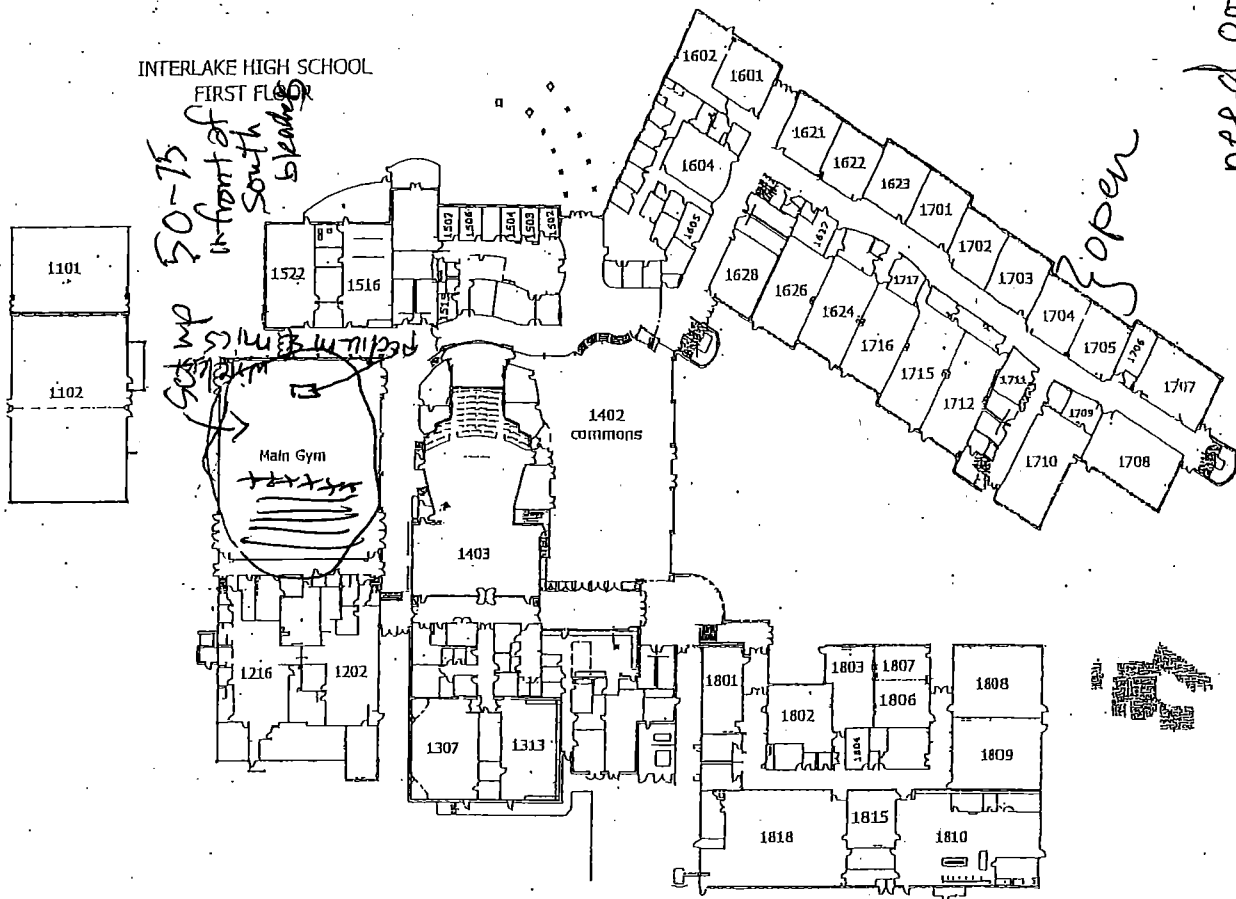
Name of Event: <i>College Conference</i>		Day of Event Contact Name:			
Date of Event: <i>2/12/15</i> PAC or Schl:		Day of Event Contact Number: <i>Deb Kraft 4168</i>			
Description of Event: <i>college conference</i>					
Add Comments in this column or at bottom ↓		IS	IHS	NHS	SHS
STAGE					
FULL STAGE Or		Y	Y	Y	Y
HALF STAGE Or	(Mid-stage forward)	N	Y	Y	Y
APRON ONLY	(In front of CLOSED Grand curtain- generally used for lectures)	Y	Y	Y	Y
Grand Curtain Set (how do you want the main curtain to look?)	CIRCLE ONE: 1)Down & closed; 2)Down & open 3)Stage Framed (grand valanced at top, w/false walls extended)				
LIGHTING					
House/Lecture	Audience and apron lights only	Y	Y	Y	Y
Standard	AS IS when you enter PAC; no light adjustment; Can be operated by User from panel or turned on at start of program and left	Y	Y	Y	Y
Custom	Requires Technician -- Specific; include info on spots & genre lift; COLORED GELS ARE USER PROVIDED	\$Y	\$Y	\$Y	\$Y
AUDIO					
Use of most items requires technician					
Choir Microphones	hung at front of stage; used for choirs	0	2	0	2
Wireless Microphones	Handheld/Lapel (or clip on)	1	2	1	1/0
Top/ Table/ Boundry Microphones	lays flat on floor or table; supercardioid/condensor	0	2	1	3
Local/ Instrument Microphones	Dynamic/Supercardioid	4	6	7	13
Mic Stands		3	4	7	8
Monitors/Speakers	Generally used for musical feedback	2	4	4	3
Communication Head-Sets (wired only)		6	6	6	12
Projector (permanently mounted in front of screens)	EPSON PowerLite 8300NL; User must bring in computer to project presentations	Front	Front	Front	Front
Projection Screen	Permanently mounted in front of main curtain at all schools	Y	Y	Y	Y
USER MUST PROVIDE COMPUTER	No MAC Support	Circle here			
CD Player	*Cannot accept MP3 formatted disks	Y*	Y*	Y	Y*
DVD Player		Y	Y	N	N
Assisted Listening Devices		N	Y	Y	Y
ADDITIONAL OPTIONS					
Podium	Identify which side of stage L C R	Y	Y	Y	Y
Music Stands	Must be Ordered; associated costs (delivery charge) for users only; In bulk of 30; 60 total	\$Y	\$Y	\$Y	\$Y
Choir Risers	Must be Ordered; associated costs (delivery charge) for public users only; 4 sections, 3 risers/20 students per section – no backs	\$Y	\$Y	\$Y	\$Y
Shells	Associated Costs to public users	N	\$Y	\$Y	\$Y
Clouds	Associated Costs to public users	N	N	\$Y	\$Y
Orchestra Pit	Associated Costs; cover removal/Installation	N	\$Y	\$Y	\$Y
Other					
Locking Fly Rail	Requires Technician	N	Y	Y	Y
"Green" Room	List items needed, i.e., tables, chairs	Y	Y	Y	Y
Ticket Booth		N	Y	Y	Y
Coat Room		N	N	N	Y
Lobby		Y	N	N	Y
Other Rooms Needed	List other rooms being requested for use in the school				

en. used for musical feedback) *cannot accept MP3 formatted disks

Additional Comments: (please be as specific as possible, we will be using this to support your event)

*(stack behind curtain)
Table @ on stage w/ 6 chairs*

INTERLAKE HIGH SCHOOL
FIRST FLOOR



REFERENCE PLAN -
FIRST FLOOR

INTERLAKE HIGH SCHOOL
SECOND FLOOR

